

PART OF S.W. 1/4, SEC. 28, T.7N., R.1W., S.L.B. & M.

51

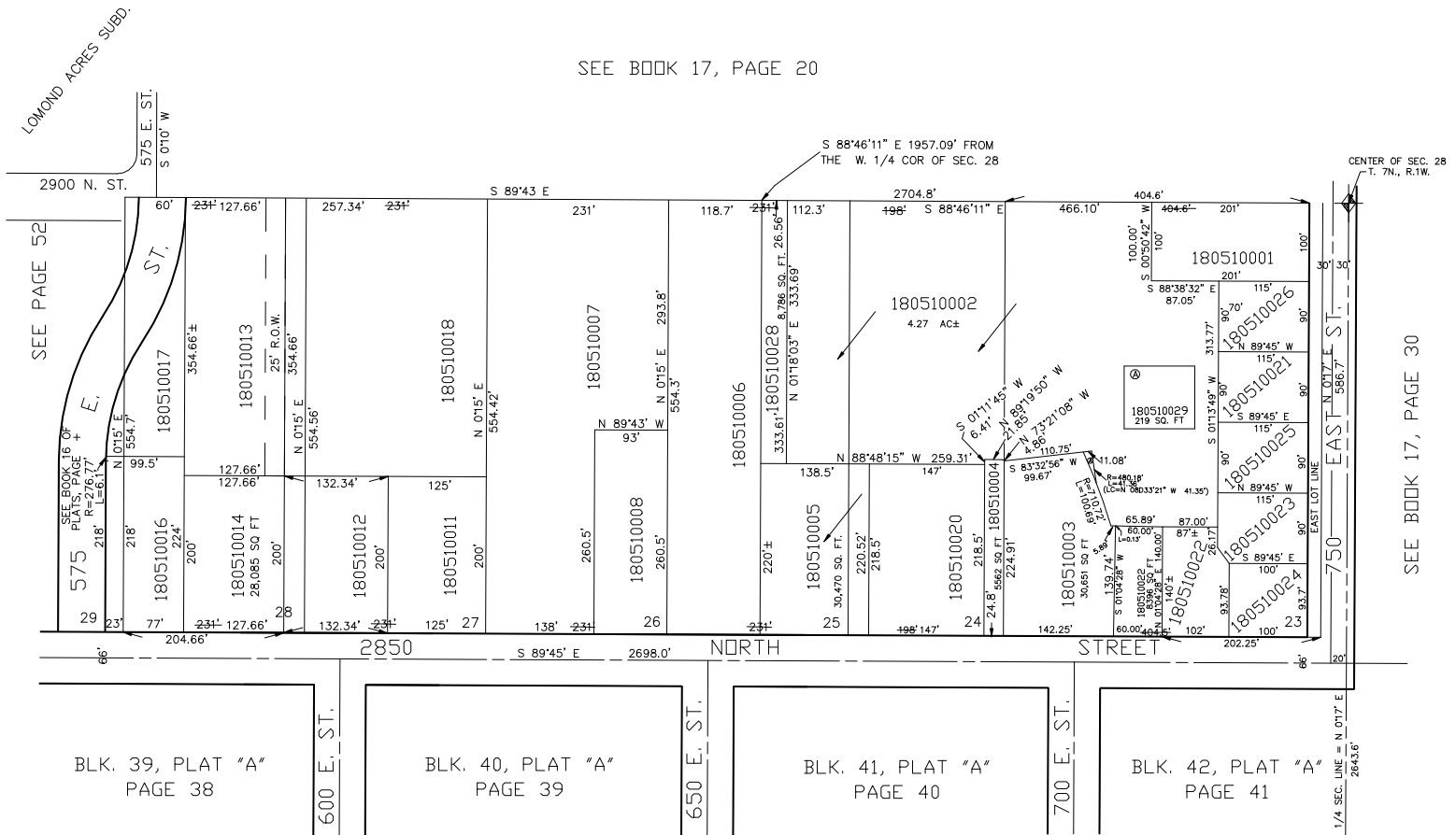
NORTH OGDEN
LOTS 23 TO 28, PLAT B

TAXING UNIT: 10

IN NORTH OGDEN CITY

SCALE 1" = 100'

SEE BOOK 17, PAGE 20



SEE BOOK 17, PAGE 30